

- **Postupak instalacije CATIA V5-6R2017 PLM Express SP4**

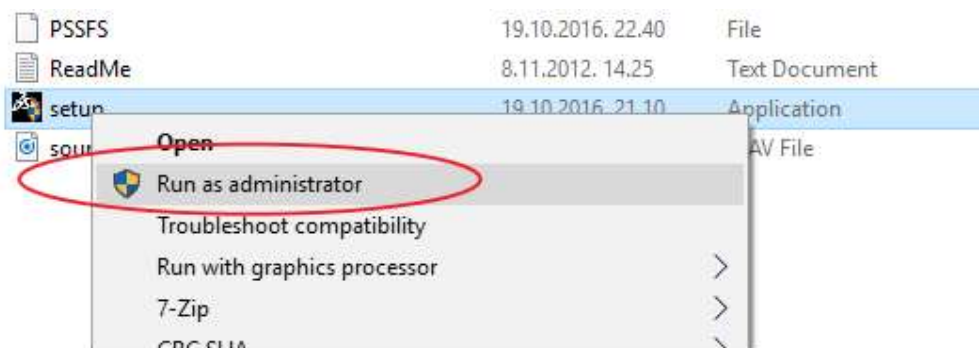
Prvo odlazimo u folder gde smo prekopirali instalaciju CATIA (može biti folder lokalno ili na serveru);

Name	Date modified	Type	Size
V5-6R2017.CATIA_PLM_Express.win_b64.1-1	28.9.2017, 12.36	File folder	
V5-6R2017.CATIA-PLMExpress-SMA.Windows64.1-2	28.9.2017, 12.31	File folder	
V5-6R2017.CATIA-PLMExpress-SMA.Windows64.2-2	28.9.2017, 12.34	File folder	
V5-6R2017.SP2.DOC_CATIA_PLM_Express.AIOS.1-1	28.9.2017, 12.36	File folder	
V5-6R2017.SP2.SPK.win_b64.1-1	28.9.2017, 12.37	File folder	
V5-6R2017.SP4.SPK.win_b64.1-1	25.4.2018, 09.26	File folder	
V5-6R2017.SP2.PDir_Multibrand.1-1	28.9.2017, 12.37	File folder	
V5-6R2017.CATIA_PLM_Express.win_b64.1-1	18.4.2017, 12.53	WinRAR ZIP архива	1.796.335 KB
V5-6R2017.CATIA-PLMExpress-SMA.Windows64.1-2	18.4.2017, 12.52	WinRAR ZIP архива	1.507.436 KB
V5-6R2017.CATIA-PLMExpress-SMA.Windows64.2-2	18.4.2017, 12.51	WinRAR ZIP архива	1.459.479 KB
V5-6R2017.SP2.DOC_CATIA_PLM_Express.AIOS.1-1	18.4.2017, 12.46	WinRAR ZIP архива	1.120.030 KB
V5-6R2017.SP2.SPK.win_b64.1-1	18.4.2017, 12.36	WinRAR ZIP архива	779.684 KB
V5-6R2017.SP2.PDir_Multibrand.1-1	18.4.2017, 12.20	WinRAR ZIP архива	15.966 KB

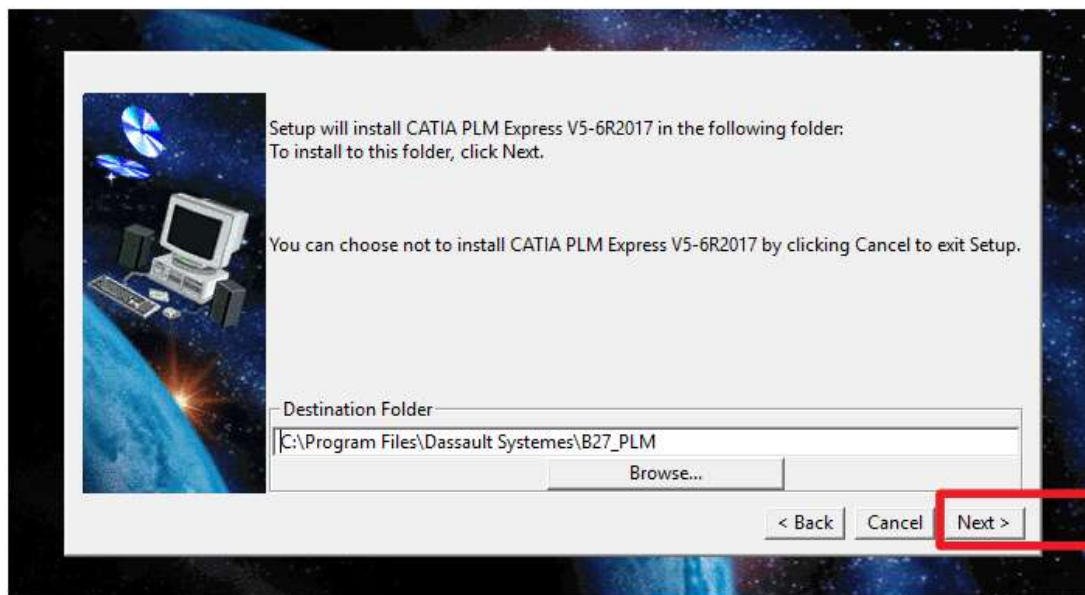
Zatim je potrebno da pokrenemo Catia **setup** (lako prepoznatljiv jer ima Catia ikonicu) kao administrator, **desni klik** na ikonicu **setup**, zatim **Run as administrator**;

Setup se nalazi na lokaciji: ... > **V5-6R2017.CATIA_PLM_Express.win_b64.1-1** > **CATIA_PLM_Express.win_b64** > **1**

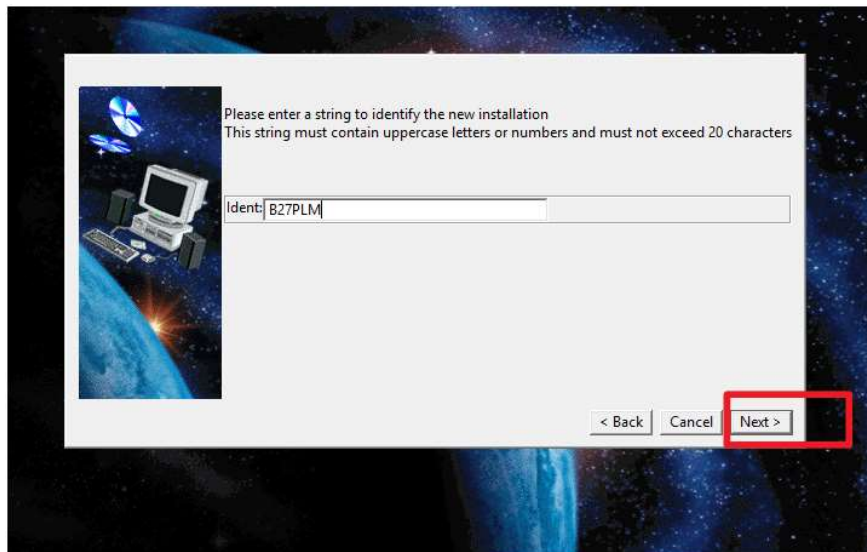
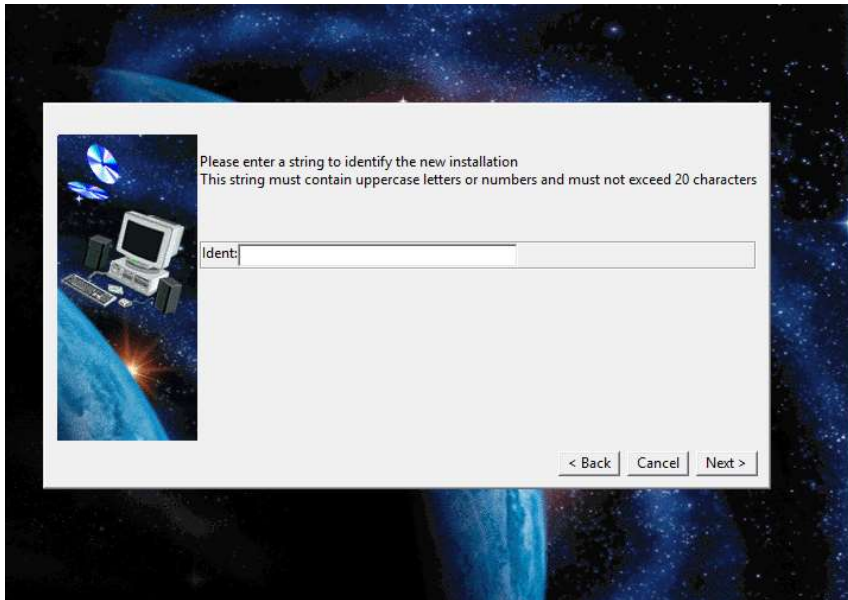
Name	Date modified	Type	Size
Odata	28.9.2017, 12.36	File folder	
install_data	28.9.2017, 12.36	File folder	
VBA	28.9.2017, 12.36	File folder	
WIN64	28.9.2017, 12.36	File folder	
1	19.10.2016, 22.40	Text Document	1 KB
AUTORUN	2.10.1997, 17.20	Setup Information	1 KB
DS	11.12.2001, 14.09	BMP File	3 KB
DSLicTarget	28.9.2016, 21.18	Application	98 KB
OSNT	25.2.2005, 10.35	File	1 KB
PhotoStudioSatellite	19.10.2016, 22.40	File	7.636 KB
PSSFS	19.10.2016, 22.40	File	1 KB
ReadMe	8.11.2012, 14.25	Text Document	1 KB
setup	19.10.2016, 21.10	Application	205 KB
sound	3.7.1997, 19.33	WAV File	324 KB



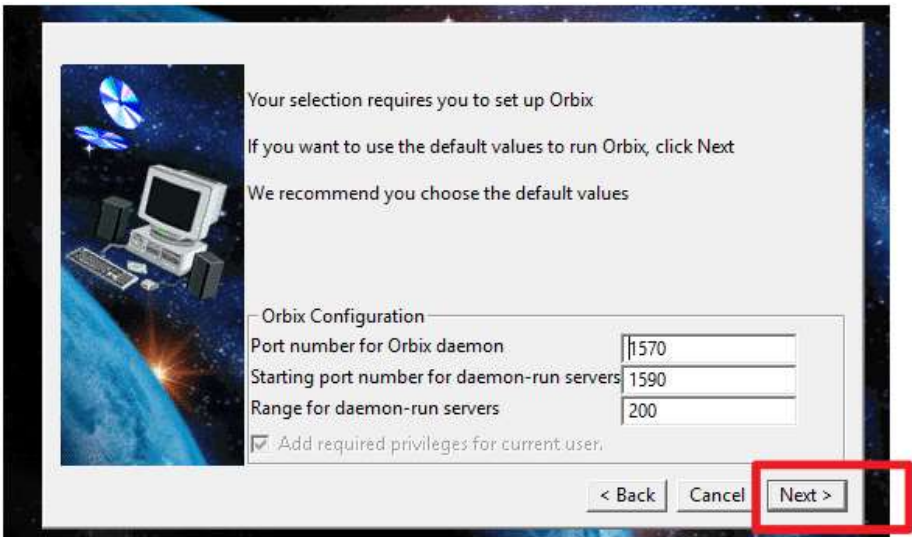
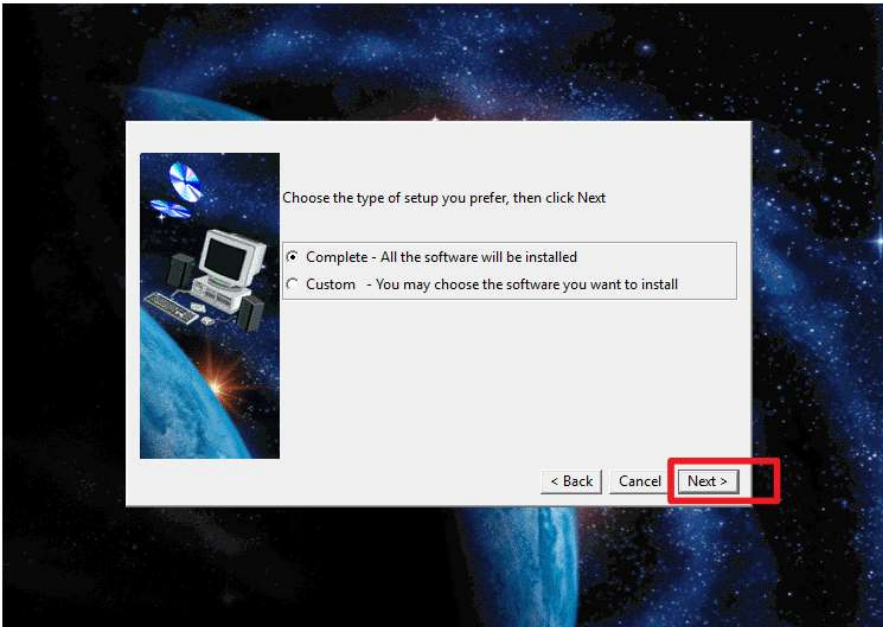
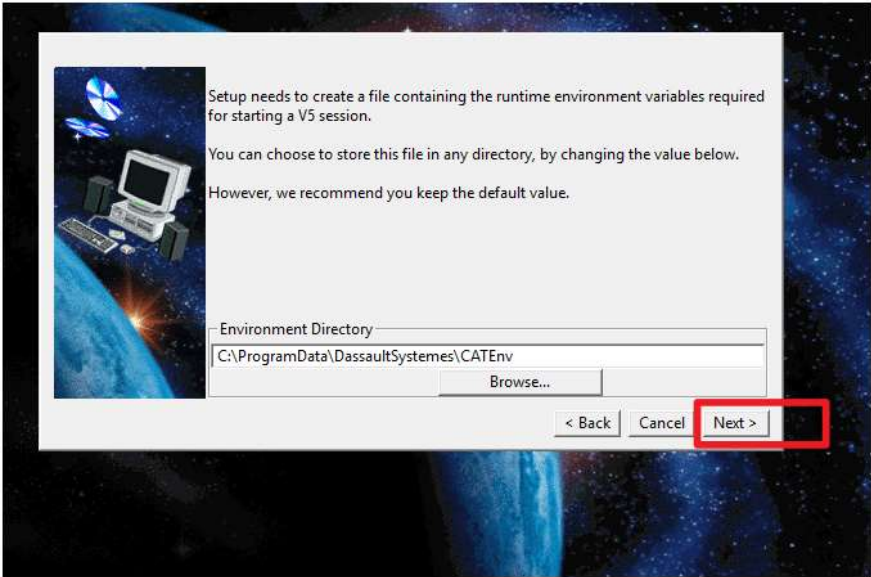
Sledeće korake pratite kako je markirano:

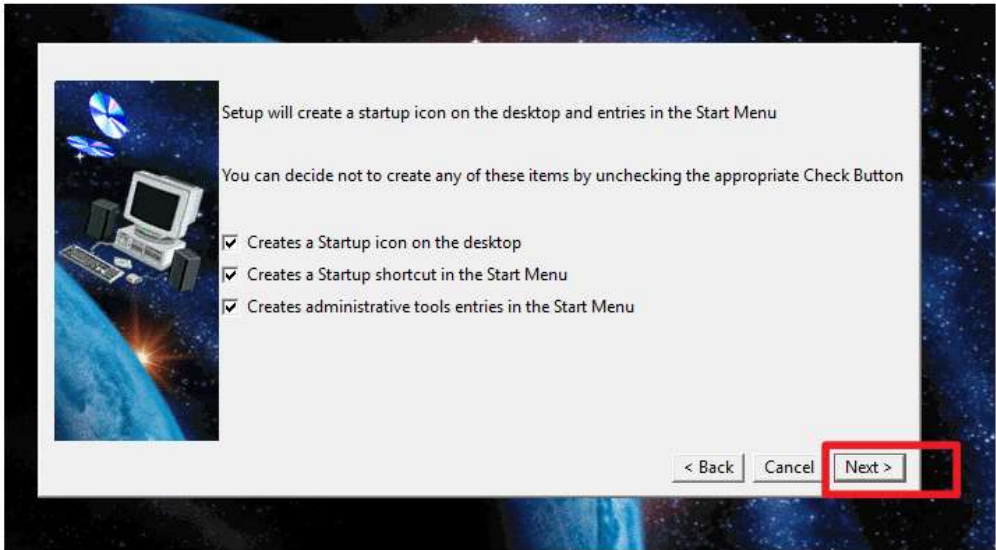
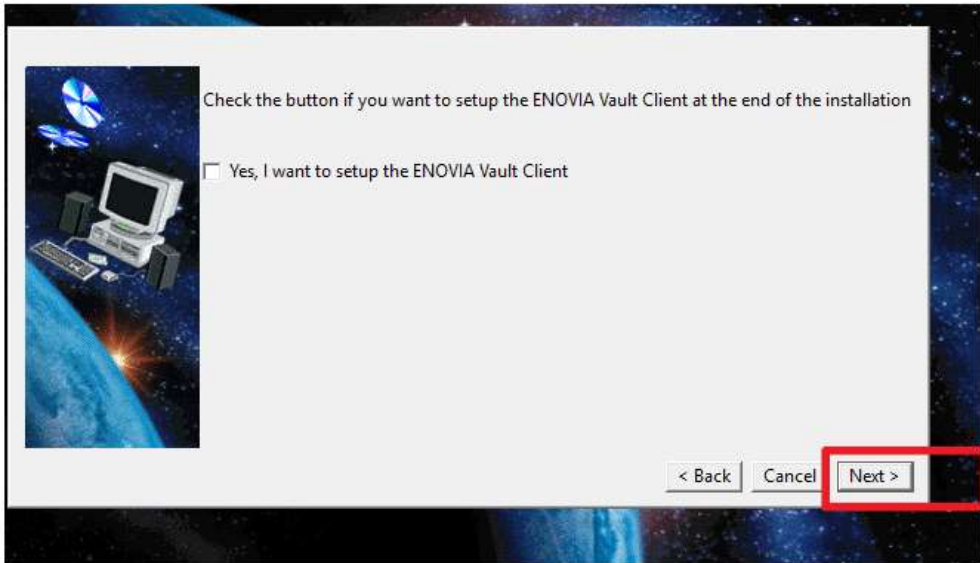
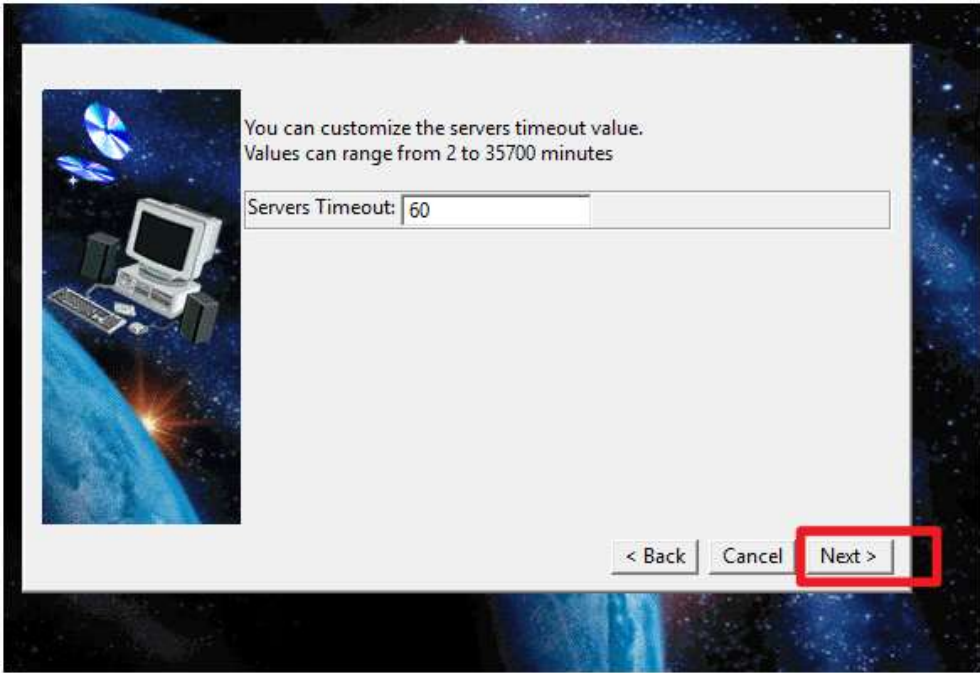


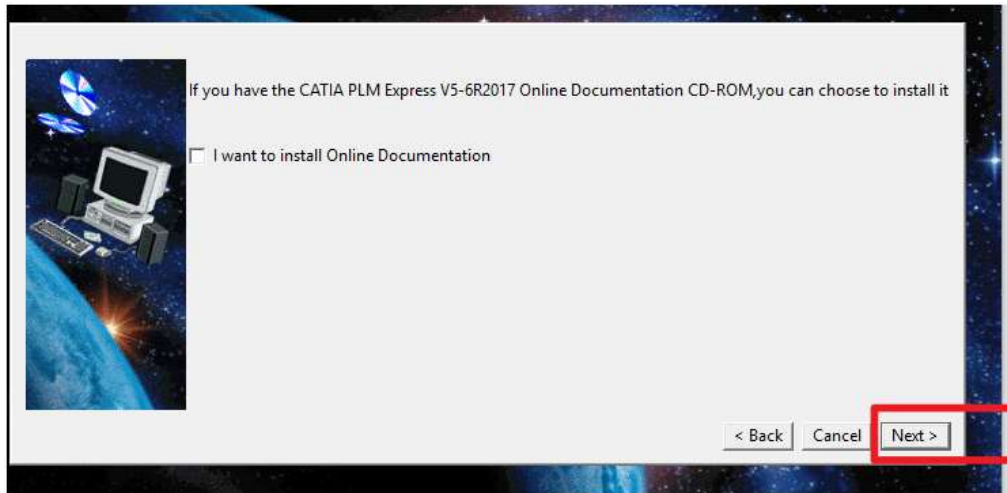
Možete kliknuti na **Browse...** i otići u folder **Dassault Systemes** i napraviti folder **B27_PLM**
/Inače Catia vam prilikom instalacije daje defaultni folder i lokaciju/ Kliknite na **Next >**



Ukucajte (u prazno polje) **B27PLM** i zatim **Next >**



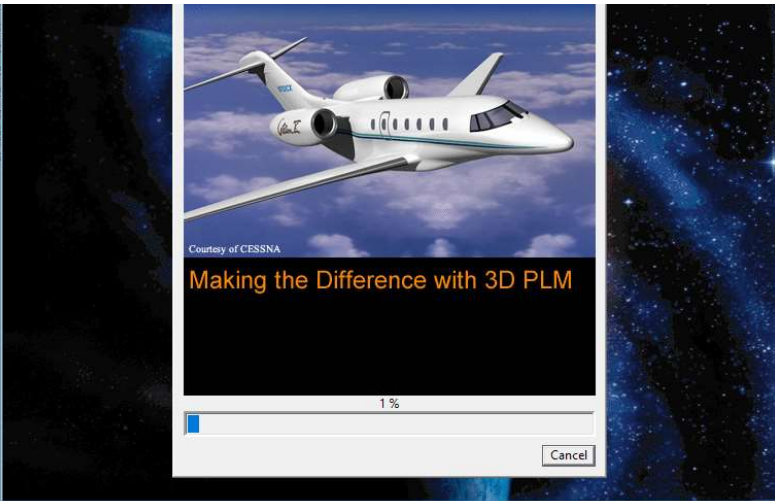




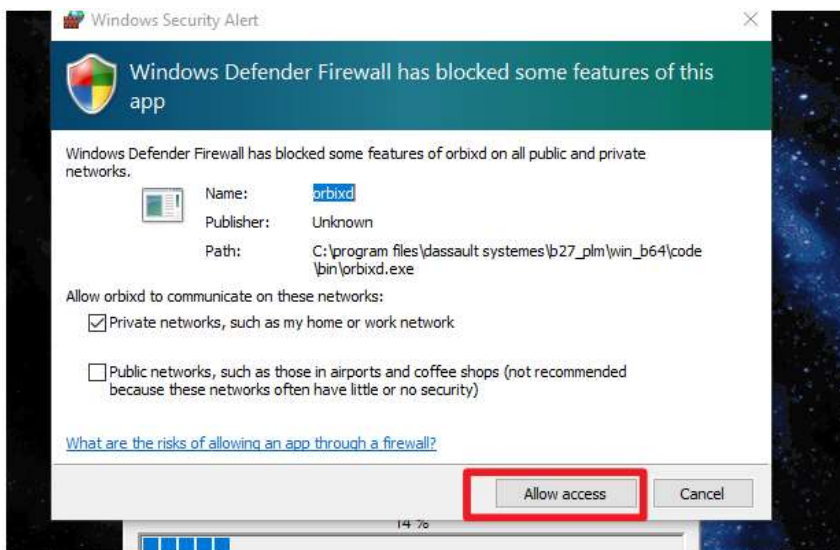
xpress V5-6R2017 Start Copying Files



11.12.4
28.9.20
25.2.20
19.10.2
19.10.2
8.11.20
19.10.2
3.7.199

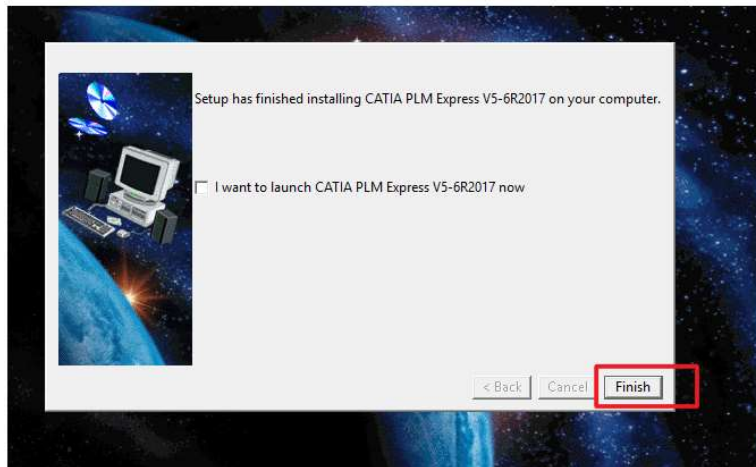


Početak Instalacije...



Ako iskoči prozor Firewall (ako ga niste prethodno isključili), samo kliknite na **Allow access**.

Odčekirati kvadratić, a zatim kliknuti na **Finish**



Kao što vidimo Catia ikonica se pojavila na Desktop-u.



- **Sledeći korak je instalacija ServicePack-a** (u našem slučaju se radi o **SP4**);

Odlazimo u folder gde se nalazi SP4 i isto ga pokrećemo **desnim klikom na ikonicu** kao admin, odnosno **Run as administrator**;


V5-6R2017.CATIA-PLMExpress-SMA.Windows64.2-2	28
V5-6R2017.SP2.DOC_CATIA_PLM_Express.AllIOS.1-1	28
V5-6R2017.SP2.SPK.win_b64.1-1	28
V5-6R2017.SP4.SPK.win_b64.1-1	25
V5-6R2017.SP2.PDir_Multibrand.1-1	28
V5-6R2017.CATIA_PLM_Express.win_b64.1-1	18
V5-6R2017.CATIA-PLMExpress-SMA.Windows64.1-2	18
V5-6R2017.CATIA-PLMExpress-SMA.Windows64.2-2	18
V5-6R2017.SP2.DOC_CATIA_PLM_Express.AllIOS.1-1	18
V5-6R2017.SP2.SPK.win_b64.1-1	18
V5-6R2017.SP2.PDir_Multibrand.1-1	18

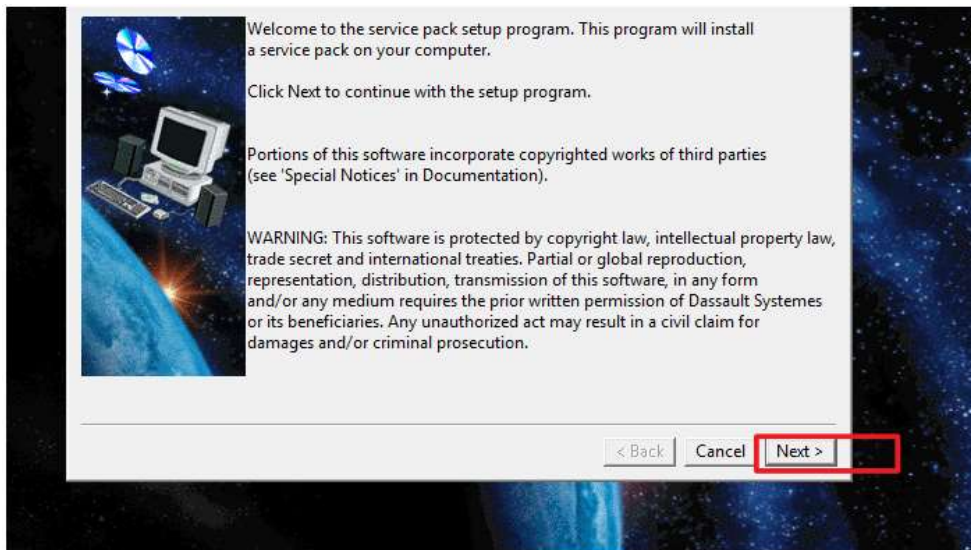
Folder: **V5-6R2017.SP4.SPK.win_b64.1-1**

Lokacija aplikacije koju treba da pokrenemo, isto je lako prepoznatljiva zbog CATIA ikonice i zove se **StartSPK**: ... > **V5-6R2017.SP4.SPK.win_b64.1-1** > **SPK.win_b64** > 1 > **WIN64** :

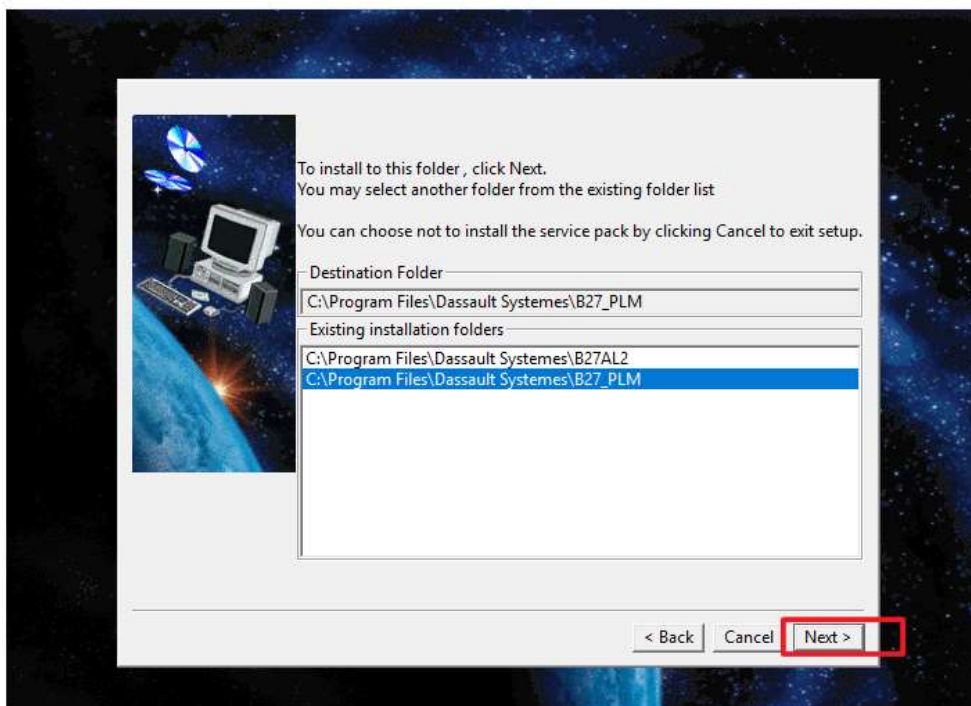
StartSATB	29.11.2017, 11:45	Application	180 KB
StartSPK	29.11.2017, 11:45	Application	205 KB
StartSPKB	29.11.2017, 11:45	Application	180 KB
STEPAP203.1	14.12.2016, 21:38	1 File	16 KB
StepDataExchange.4	29.11.2017, 12:29	4 File	764 KB
STEPDX3DAnnotations.4	29.11.2017, 12:28	4 File	71 KB
STEPDXCompositesExport.4	29.11.2017, 12:28	4 File	28 KB
STEPDXCompositesImport.4	29.11.2017, 12:28	4 File	29 KB

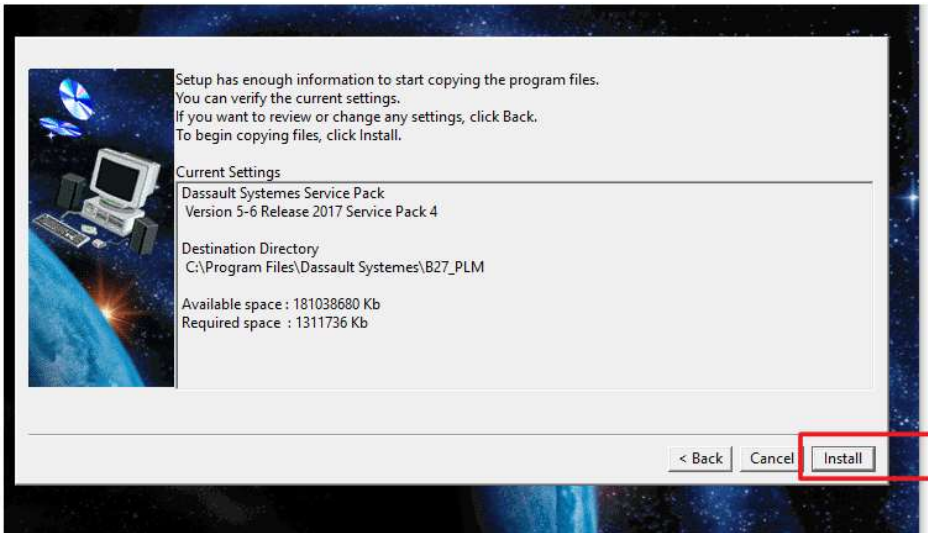
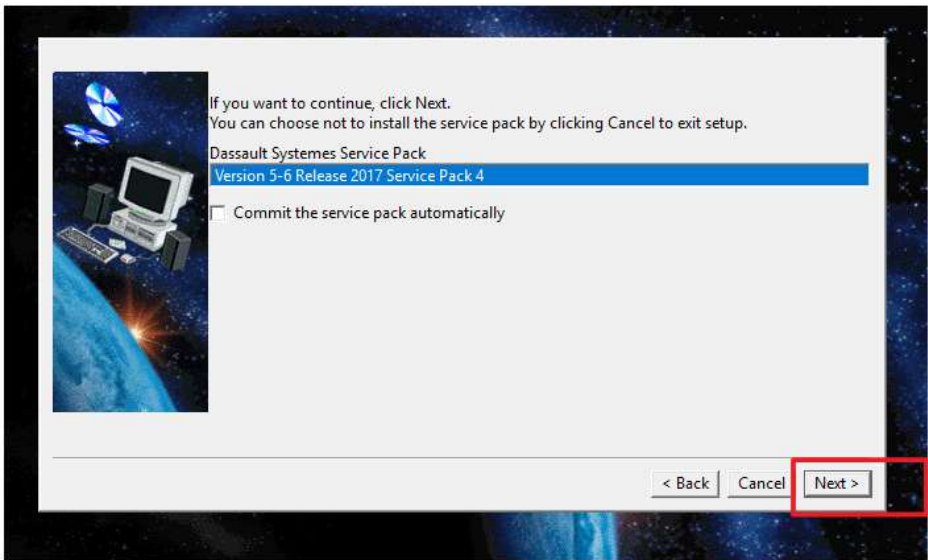
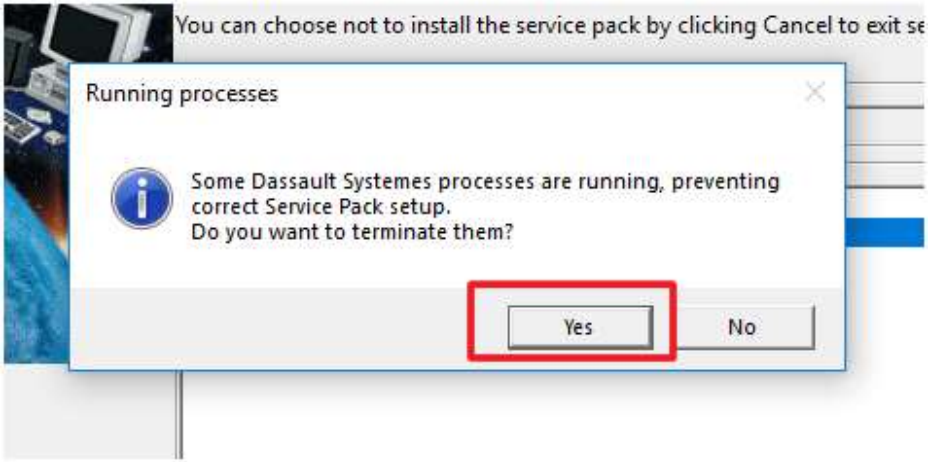
StartSATB	29.11.2017, 11:45	Application	180 KB
StartSPK	29.11.2017, 11:45	Application	205 KB
StartSPKB	29.11.2017, 11:45	Application	180 KB
STEPAP203.1	14.12.2016, 21:38	1 File	16 KB
StepDataExchange.4	29.11.2017, 12:29	4 File	764 KB
STEPDX3DAnnotations.4	29.11.2017, 12:28	4 File	71 KB
STEPDXCompositesExport.4	29.11.2017, 12:28	4 File	28 KB
STEPDXCompositesImport.4	29.11.2017, 12:28	4 File	29 KB
STEPIntera...	29.11.2017, 12:28	4 File	293 KB

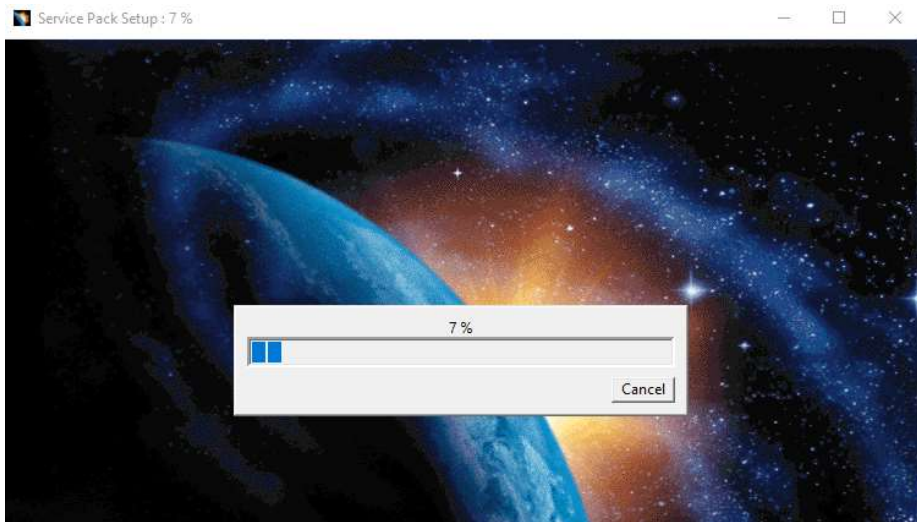
Open
 **Run as administrator**



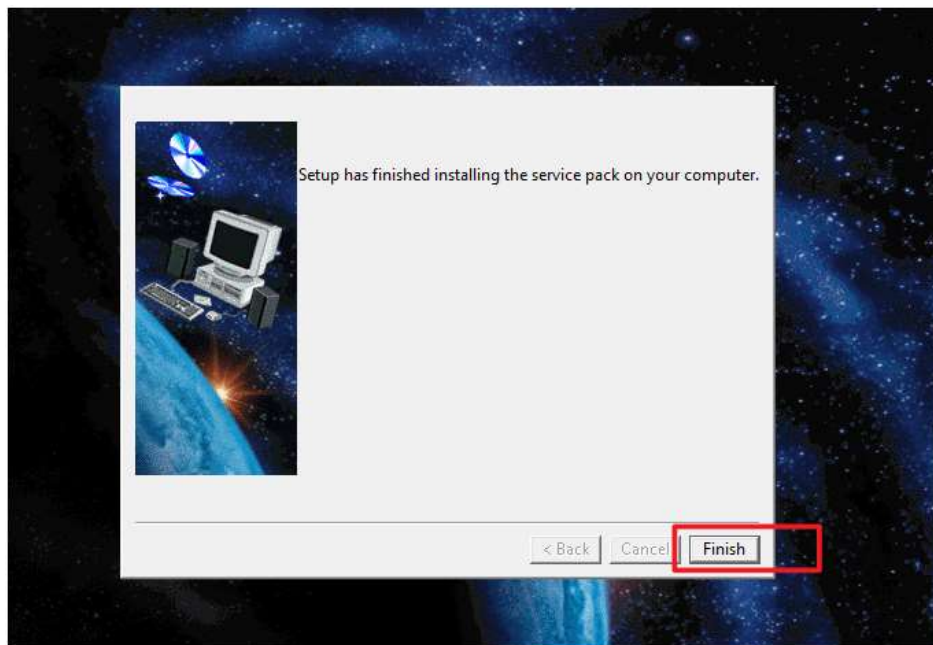
Ako imamo više instaliranih CATIA V5-6R2017, označimo onu kojoj pripada odgovarajući SP.







Početak Instalacije...

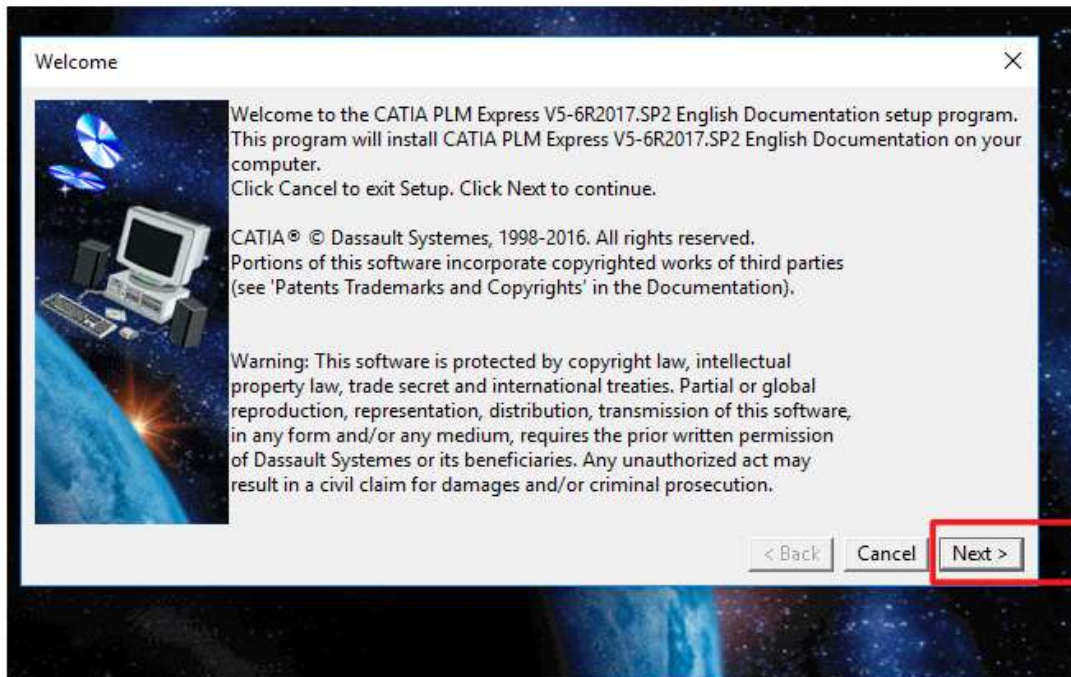
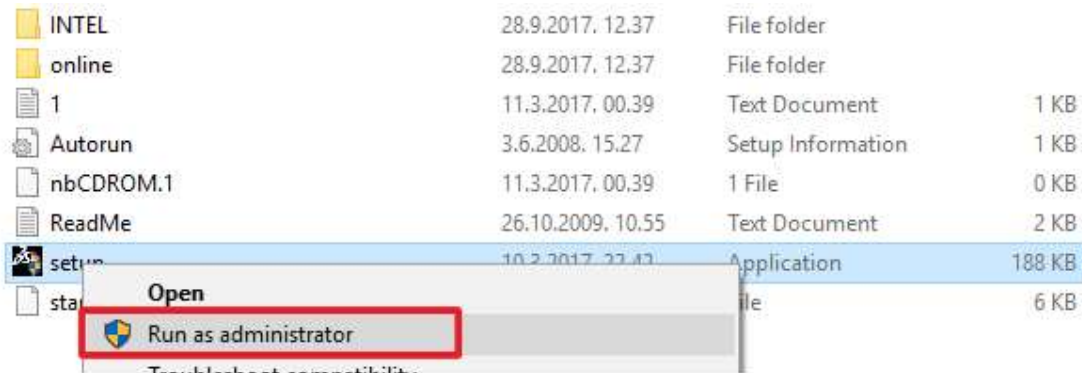


- Sledeći korak je instalacija dokumentacije;

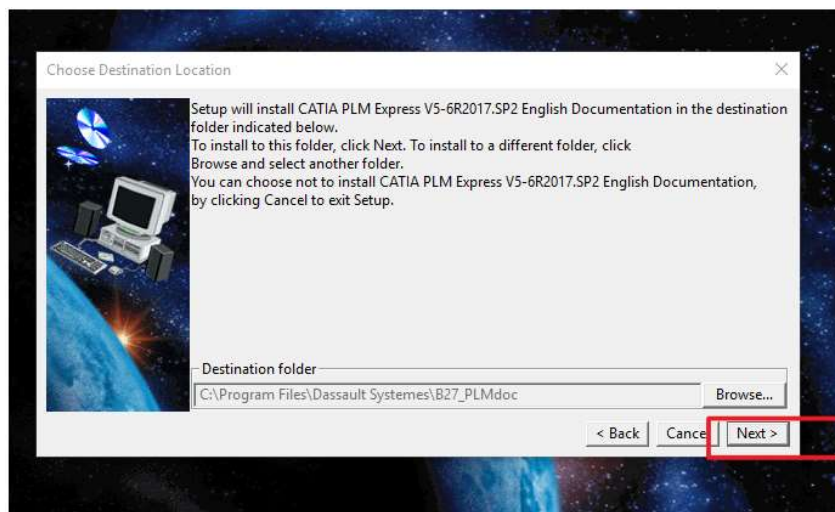
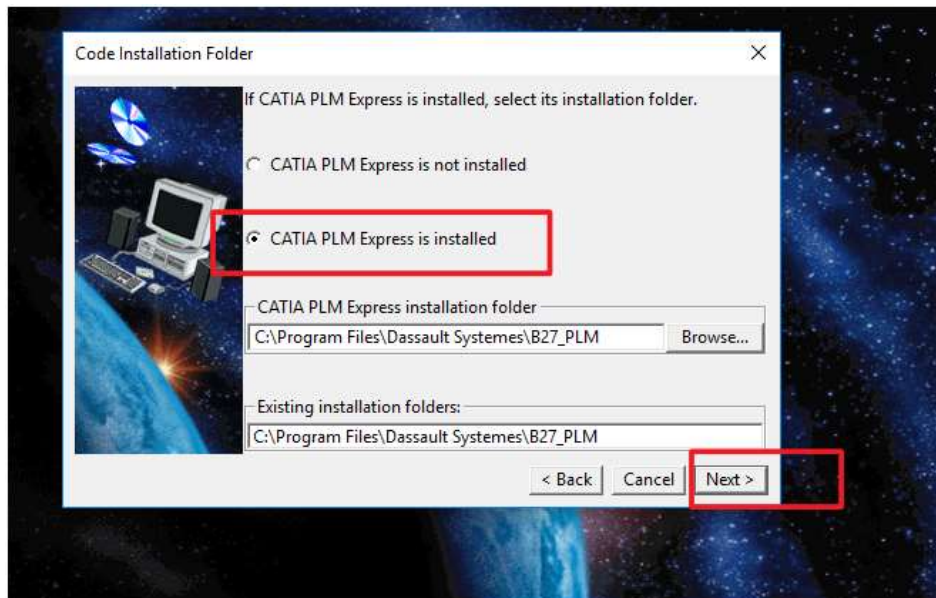
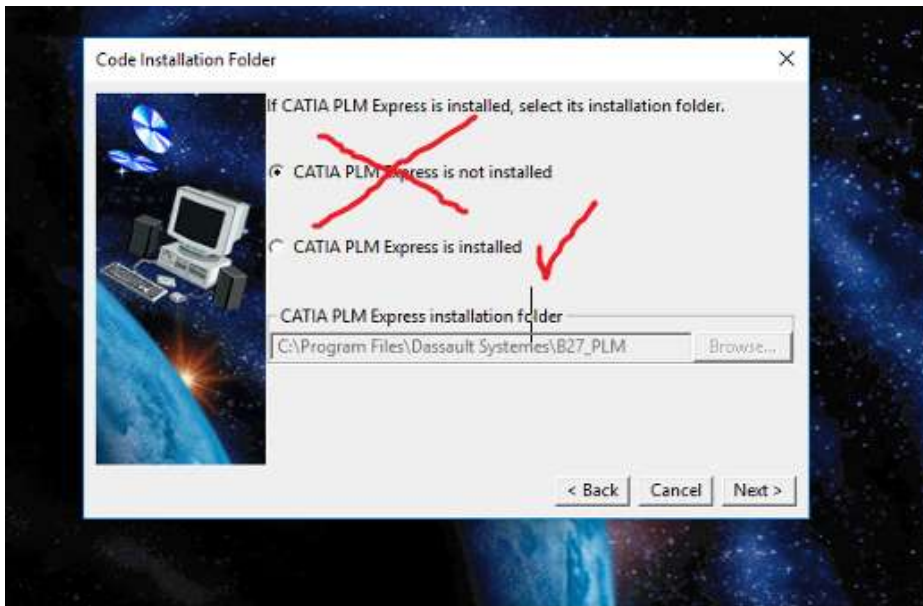
Odlazimo u folder: **V5-6R2017.SP2.DOC_CATIA_PLM_Express.AIIOS.1-1**

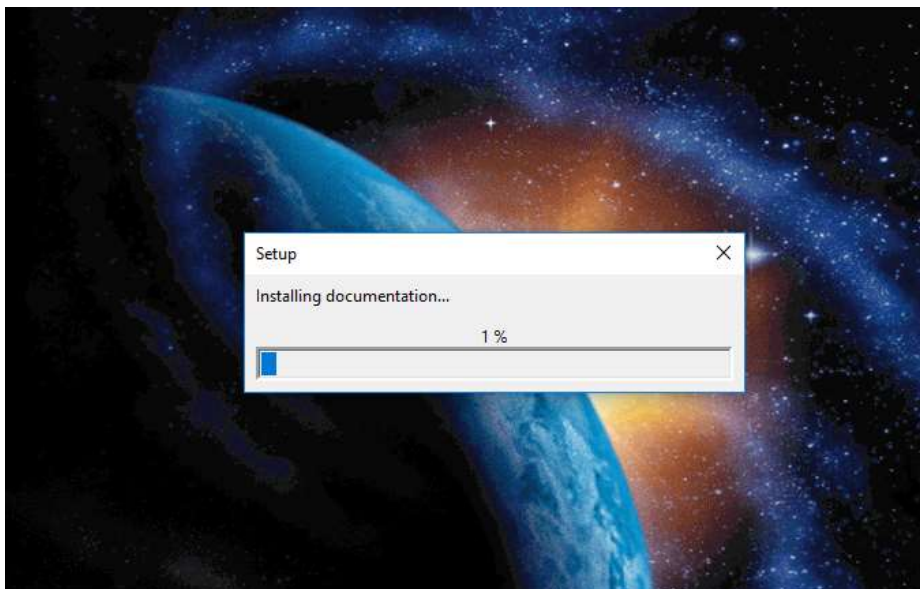
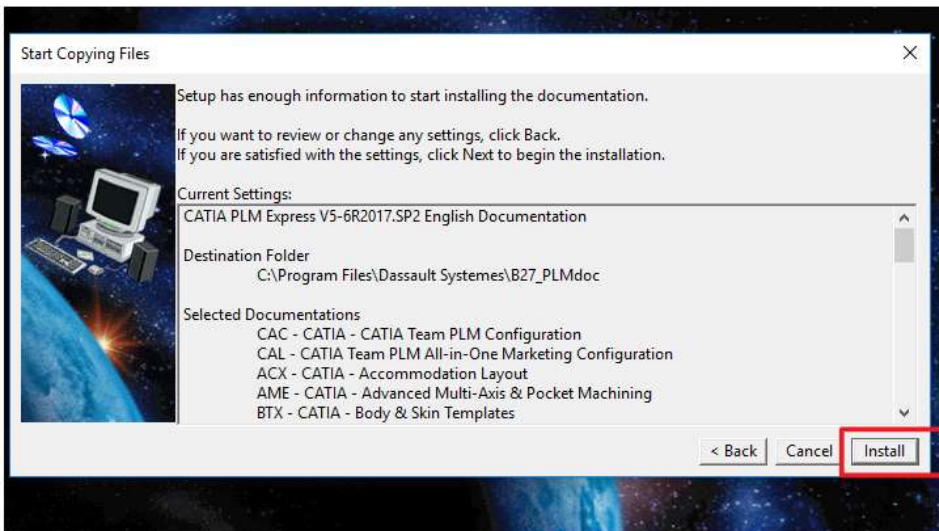
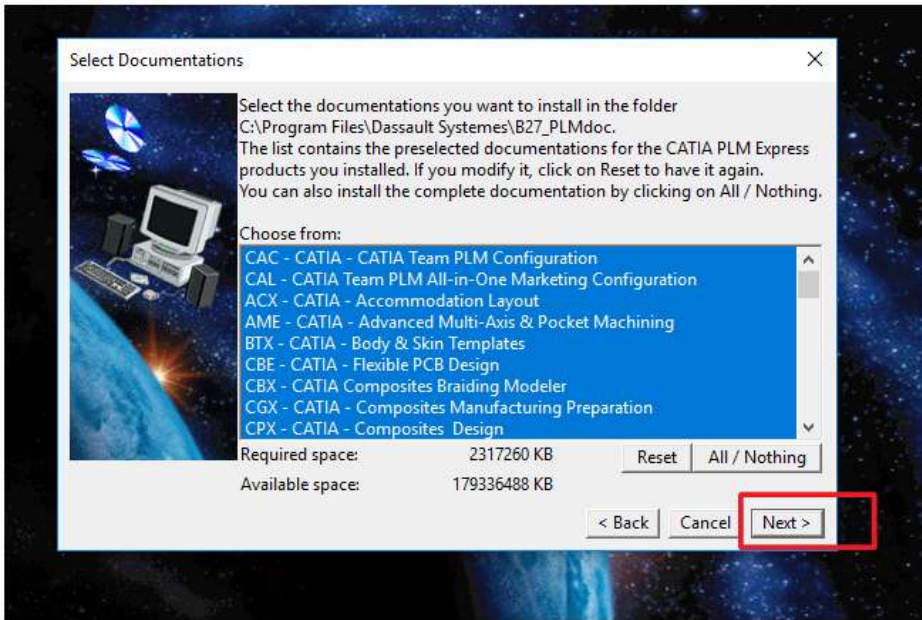
Lokacija: > **V5-6R2017.SP2.DOC_CATIA_PLM_Express.AIIOS.1-1** >
DOC_CATIA_PLM_Express.AIIOS > 1

Isto kao u prethodna 2 slučaja, pokrećemo kao **desnim klikom** miša odgovarajuću aplikaciju/**setup** (ikonu CATIA) **Run as administrator**:

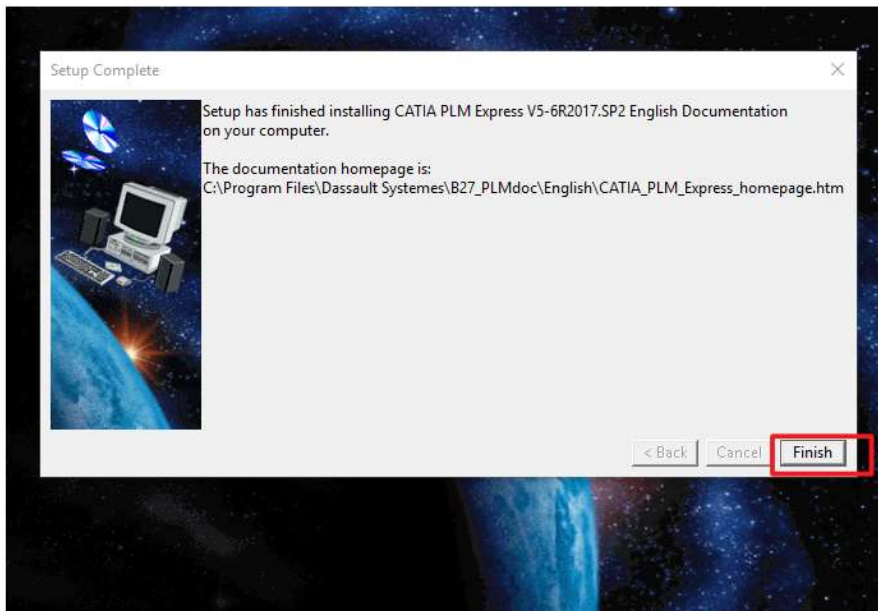


Odčekiramo, pošto je CATIA PLM Instalirana, čekiramo drugu opciju





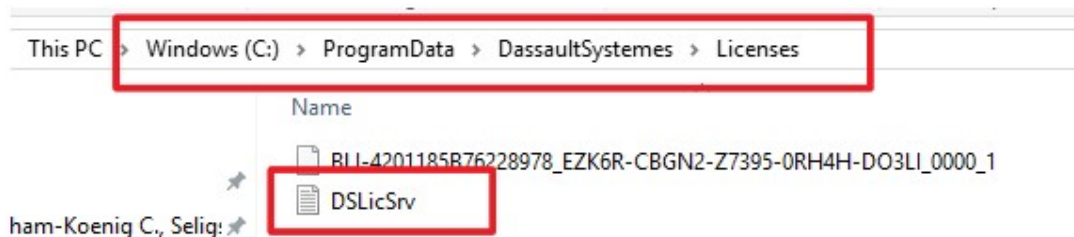
Početak Instalacije...



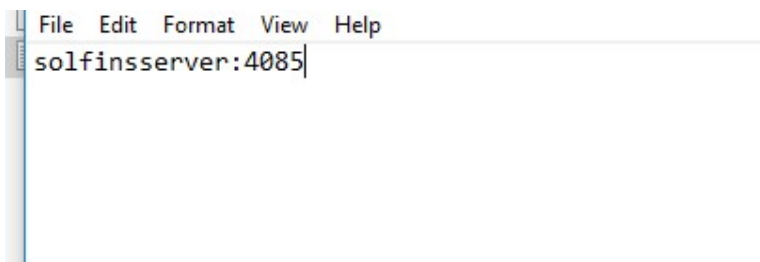
- Ostalo je još da se povežemo sa serverom (pošto su licence na serveru);

Odlazimo u folder **ProgramData** (postoji mogućnost da je sakriven da onda moramo u Control Panel da ga učinimo vidljivim);

Zatim, **ProgramData** > **DassaultSystemes** > **pravimo folder Licenses** > **pravimo Text Document DSLicSrv**

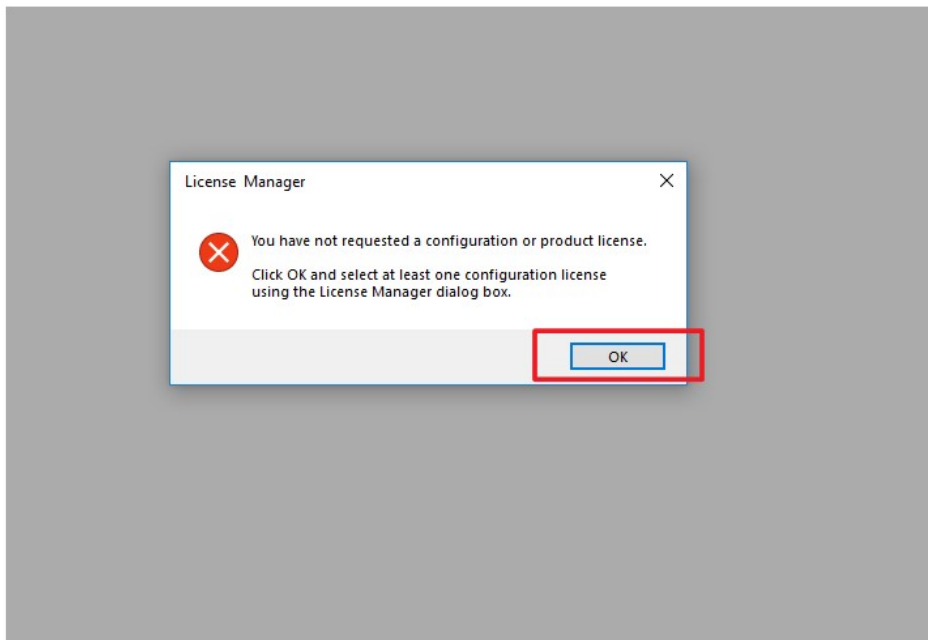


Zatim otvaramo **Text Document** i u njega upisujemo **ime serverskog računara:4085** i naravno sačuvamo sve to na kraju;

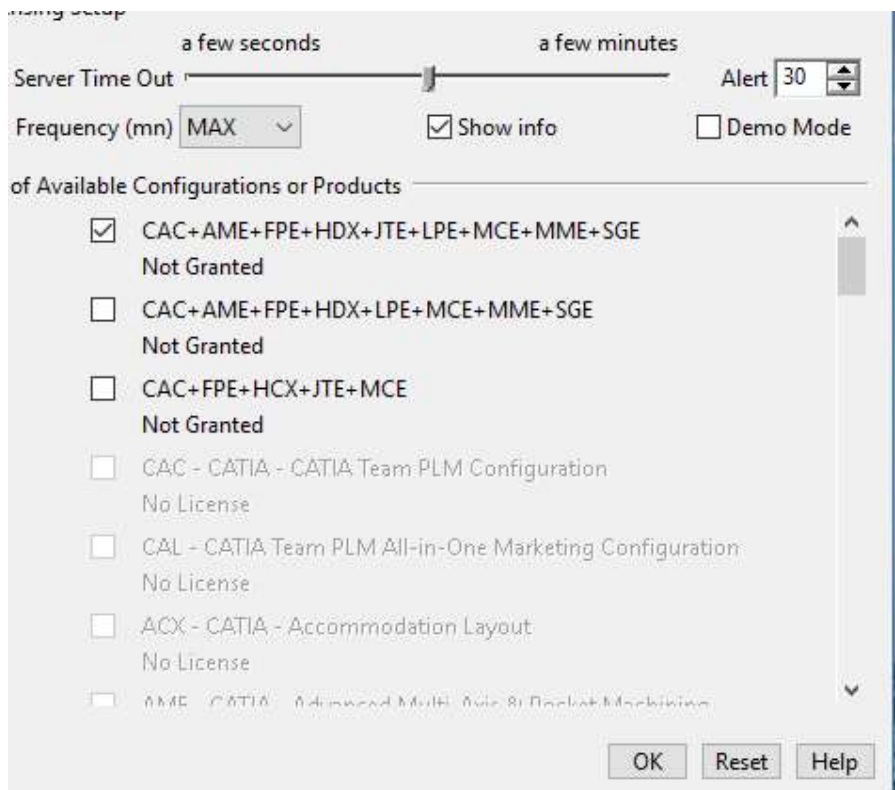


Pokrećemo CATIA – u

Prvi put kada pokrenemo CATIA-u moramo da čekiramo licencu



Otvara nam se prozor sa licencama i čekiramo odgovarajuću licencu, zatim OK;



Isključimo skroz CATIA-u i ponovo je startujemo;

